

Ocean View School District

Comprehensive School Safety Plan



Ocean Vista Early Education School
Antoinette Dodge, Director
Shahida Chaudhry, Site Supervisor
2009 - 2010
Board Approved on

SECTION I – SAFE SCHOOL PLAN	1
ASSESSMENT OF CURRENT STATUS OF SCHOOL CRIME.....	2
CHILD ABUSE REPORTING PROCEDURES	2
DISCIPLINE PLAN	2
<i>Consequences</i>	3
DISCRIMINATION/HARASSMENT	3
DRESS CODE	3
HATE CRIME REPORTING PROCEDURES	3
SAFE AND ORDERLY ENVIRONMENT	4
<i>Conduct</i>	4
<i>Positive School Climate</i>	4
SAFE INGRESS AND EGRESS.....	4
SEXUAL HARASSMENT-PERSONNEL.....	4
SEXUAL HARASSMENT-STUDENTS	5
SECTION II – INITIAL RESPONSE CHECKLISTS	6
AIRCRAFT CRASH.....	7
BOMB THREAT	7
EARTHQUAKE – DUCK, COVER, HOLD	8
FIRE	9
FLOODING	10
HAZARDOUS MATERIALS INCIDENT	11
LOCK DOWN	12
DIRECT RESPONDING EMERGENCY PERSONNEL TO THE VICTIM(S).	12
MEDICAL EMERGENCY.....	12
NUCLEAR ATTACK.....	13
RIOT/CIVIL DISORDER.....	15
SUSPICIOUS INDIVIDUAL OR CRIMINAL ACTIVITY ON CAMPUS.....	16
TSUNAMI	17
UTILITY FAILURE	17
SECTION III – POSITION RESPONSIBILITIES	19
ASSEMBLY/SHELTER UNIT	20
DEPUTY INCIDENT COMMANDER.....	21
FACILITIES UNIT.....	21
FOOD UNIT	22
HAZARD CONTROL BRANCH.....	23
INCIDENT COMMANDER	23
LOGISTICS SECTION CHIEF.....	25
MEDICAL BRANCH.....	28
PUBLIC INFORMATION OFFICER (PIO).....	29
SEARCH AND RESCUE BRANCH	31
SECURITY BRANCH.....	32
SECTION IV – SITE EMERGENCY PLAN	34
EMERGENCY PLAN DIGEST	35
EMERGENCY PLAN	35
<i>Phase 1:</i>	35
EMERGENCY MAPS.....	43

SECTION I – SAFE SCHOOL PLAN

ASSESSMENT OF CURRENT STATUS OF SCHOOL CRIME

Staff members work with the director, families and outside agencies to create a safe school environment for all students, parents, and staff. Ocean View Early Education Schools experience little crime. Occasional graffiti is removed or covered promptly. Students that continue to disrupt instruction or engage in inappropriate behavior are sent home or removed from the program.

CHILD ABUSE REPORTING PROCEDURES

School employees are mandated reporters and are obligated to report all known or suspected incidents of child abuse and neglect. General procedures are noted below.

1. Initial Telephone Report

Immediately or as soon as practicably possible after knowing or observing suspected child abuse or neglect, a mandated reporter shall make a report by telephone to any police department (excluding a school district police/security department), sheriff's department, county probation department if designated by the county to receive such reports, or the county welfare department.

Human Services Agency - Children's Services
4651 Telephone Road
Ventura, CA 93003
(805) 654-3200

When the telephone report is made, the mandated reporter shall note the name of the official contacted, the date and time contacted, and any instructions or advice received.

2. Written Report

Within 36 hours of receiving the information concerning the incident, the mandated reporter shall prepare and send to the appropriate agency a written report which includes a completed Department of Justice form. Mandated reporters may obtain copies of the above form from either the district or the appropriate agency.

Reports of suspected child abuse or neglect shall include, if known:

- a. The name, business address and telephone number of the person making the report and the capacity that makes the person a mandated reporter
- b. The child's name and address, present location and, where applicable, school, grade and class
- c. The names, addresses and telephone numbers of the child's parents/guardians
- d. The information that gave rise to the reasonable suspicion of child abuse or neglect and the source(s) of that information
- e. The name, address, telephone number and other relevant personal information about the person(s) who might have abused or neglected the child

The mandated reporter shall make a report even if some of this information is not known or is uncertain to him/her. Information relevant to the incident of child abuse or neglect may also be given to an investigator from an agency that is investigating the case.

DISCIPLINE PLAN

At Ocean View Early Education School positive reinforcement is the main form of discipline. Positive behavior is acknowledged, thereby creating a positive way of thinking for each child. Limits, both inside and out, are clearly established and when necessary, redirection will be initiated for any child taking advantage of a rule.

In general, rules are made by the staff and children. Discipline is designed to promote the development of self-direction, self-control, and socially acceptable behavior. This is accomplished through sensitivity, consistence, firmness, and follow-through. No staff member will physically discipline a child in any manner.

Consequences

When a child has not been meeting the behavioral standards of our program, the following steps will be taken:

1. The teacher will discuss the situation, feelings, and alternatives with the child.
2. The behavior will be documented, along with what provoked the behavior, and what the teacher did to modify the behavior.
3. The parent and Program Director will be notified of the problem.
4. A parent-Director/Site Supervisor conference will be held.
5. A progress check or follow-up conference will be held.
6. If the problem is not resolved, the situation will be considered and the child may be removed from the program. *If the child's behavior threatens the safety or well being of the other children, himself/herself, or staff, the parent will be notified and expected to pick up the child within one hour. Extreme or violent behavior may result in immediate removal from the program for an unspecified amount of time to be determined on an individual basis. A parent-child-staff meeting must be held prior to the child returning to the program. Parent/child's failure to comply with the above policies may result in termination from the program.*
7. Termination from the program will be considered in extreme situations; after all reasonable resources have been exhausted

DISCRIMINATION/HARASSMENT

District programs and activities shall be free from discrimination, including harassment, with respect to the actual or perceived ethnic group, religion, gender, color, race, ancestry, national origin, and physical or mental disability, age or sexual orientation.

Ocean View School District prohibits intimidation or harassment of any student by any employee, student or other person in the district. Staff shall be alert and immediately responsive to student conduct which may interfere with another student's ability to participate in or benefit from school services, activities or privileges.

Students who harass other students shall be subject to appropriate discipline, up to and including counseling, suspension and/or expulsion. An employee who permits or engages in harassment may be subject to disciplinary action, up to and including dismissal.

DRESS CODE

Play clothing is necessary in order for children to be uninhibited in their physical activities. Creative materials can be messy, so please dress your child accordingly. Closed toed-shoes must be laced and worn with socks: Please - no sandals, thongs, etc. These are restrictive and dangerous to outside play.

We realize that accidents may occur and therefore you must provide a full set of labeled clothing for your child to change into. This should consist of one pair of pants or shorts (in the summer), one shirt, one set of underwear, and socks. Be sure to label them in permanent ink. Please check often to make sure these are available and still fit correctly. If your child does not have a change of clothes in his/her cubby you will be called to bring clothes.

In order to make it easier for children to use the bathroom by themselves, make sure their clothing is clothing they can manage. Some buckles, snaps and belts can be frustrating and may lead to accidents due to the difficulty level. Elastic waist pants are preferred. Overalls are not recommended.

If a child has two or more accidents in a day, or continuously has accidents, he/she may not be ready for our program.

HATE CRIME REPORTING PROCEDURES

Ocean View School District affirms the right of every student to be protected from hate-motivated behavior. Any student who feels that he/she is a victim of hate-motivated behavior shall immediately contact the principal or designee. If the student believes that the situation has not been remedied by the Director or designee, he/she may file a complaint in accordance with district complaint procedures.

Staff who receive notice of hate-motivated behavior or personally observe such behavior shall notify the Director, Superintendent, or designee, and law enforcement, as appropriate. Students demonstrating hate-motivated behavior shall be subject to discipline in accordance with Board policy and administrative regulation.

SAFE AND ORDERLY ENVIRONMENT

Students shall be expected to exhibit appropriate conduct that does not infringe upon the rights of others or interfere with the school program. Behavior is considered appropriate when students are diligent in study, careful with school property, courteous and respectful towards their teachers, other staff, students, and volunteers.

The following behaviors are **not** acceptable:

1. Disrupting the program.
2. Endangering the health or safety of children, staff, or other adults.
3. Continuous refusal to follow acceptable rules of behavior.
4. Habitual use of profanity, vulgarity, or obscenity.
5. Leaving the center without permission.
6. Theft or damage of center property.
7. Possession or use of illegal substances.
8. Inappropriate sexual conduct.
9. Possession of any weapons.

Positive School Climate

Ocean View School District provides an orderly, caring and nondiscriminatory learning environment in which all students can feel comfortable and take pride in their school and their achievements.

Staff members teach students the meaning of equality, human dignity, and mutual respect, and to employ cooperative learning strategies that foster positive interactions in the classroom among students from diverse backgrounds. Students receive instruction and counseling designed to promote positive racial and ethnic identity, help students understand diverse cultures, teach them to think critically about racial bias and show them how to deal with discriminatory behavior in appropriate ways.

Students have opportunities to voice their concerns about school policies and practices and to share responsibility for solving problems that affect their school. The Superintendent or designee may initiate student courts, campus beautification projects, buddy systems, vandalism prevention campaigns and other similar programs. Staff members encourage and reward success and achievement, participation in community projects and positive student conduct.

The schools shall promote nonviolent conflict resolution techniques in order to encourage attitudes and behaviors that foster harmonious relations. As part of this effort, students shall be taught the skills necessary to reduce violence, including communication skills, anger management, bias reduction and mediation skills. Staff shall receive training that implements and supports conflict resolution techniques, and training in conflict resolution techniques shall be available to parents/guardians and volunteers.

SAFE INGRESS AND EGRESS

Parents park in front of or near the school and enter through the main entrance to sign students in and out of the school. All other gates and doors remain locked during school hours.

SEXUAL HARASSMENT-PERSONNEL

Prohibited sexual harassment includes, but is not limited to, unwelcome sexual advances, unwanted requests for sexual favors or other unwanted verbal, visual or physical conduct of a sexual nature made against another person of the same or opposite gender, in the work or educational setting, when: (Education Code 212.5; 5 CCR 4916)

1. Submission to the conduct is made expressly or implicitly a term or condition of the individual's employment
2. Submission to or rejection of such conduct by the individual is used as the basis for an employment decision affecting him/her
3. The conduct has the purpose or effect of unreasonably interfering with the other individual's work performance; creating an intimidating, hostile or offensive work environment; or adversely affecting the other individual's evaluation, advancement, assigned duties, or any other condition of employment or career development
4. Submission to or rejection of the conduct by the other individual is used as the basis for any decision affecting him/her regarding benefits, services, honors, programs or activities available at or through the district

Other examples of actions that might constitute sexual harassment, whether committed by a supervisor or any other employee, or a non-employee, in the work or educational setting, include but are not limited to:

1. Unwelcome verbal conduct such as sexual flirtations or propositions; graphic comments about an individual's body; overly personal conversations or pressure for sexual activity; sexual jokes or stories; unwelcome sexual slurs, epithets, threats, innuendoes, derogatory comments, sexually degrading descriptions or the spreading of sexual rumors
2. Unwelcome visual conduct such as written notes, drawings, pictures, graffiti, gestures or sexually explicit e-mails; displaying sexually suggestive objects
3. Unwelcome physical conduct such as massaging, grabbing, fondling, stroking or brushing the body; touching an individual's body or clothes in a sexual way; cornering, blocking, leaning over or impeding normal movements

Prohibited sexual harassment may also include any act of retaliation against an individual who reports a violation of the district's sexual harassment policy or who participates in the investigation of a sexual harassment complaint.

SEXUAL HARASSMENT-STUDENTS

Prohibited sexual harassment includes, but is not limited to, unwelcome sexual advances, unwanted requests for sexual favors or other unwanted verbal, visual or physical conduct of a sexual nature made against another person of the same or opposite gender, in the educational setting, when: (Education Code 212.5; 5 CCR 4916)

1. Submission to the conduct is explicitly or implicitly made a term or condition of a student's academic status or progress
2. Submission to or rejection of the conduct by a student is used as the basis for academic decisions affecting the student
3. The conduct has the purpose or effect of having a negative impact on the student's academic performance, or of creating an intimidating, hostile or offensive educational environment
4. Submission to or rejection of the conduct by the student is used as the basis for any decision affecting the student regarding benefits and services, honors, programs, or activities available at or through any district program or activity

Types of conduct which are prohibited in the district and which may constitute sexual harassment include, but are not limited to:

1. Unwelcome leering, sexual flirtations or propositions
2. Sexual slurs, epithets, threats, verbal abuse, derogatory comments or sexually degrading descriptions
3. Graphic verbal comments about an individual's body, or overly personal conversation
4. Sexual jokes, notes, stories, drawings, pictures or gestures
5. Spreading sexual rumor
6. Teasing or sexual remarks about students enrolled in a predominantly single-gender class
7. Massaging, grabbing, fondling, stroking or brushing the body
8. Touching an individual's body or clothes in a sexual way
9. Purposefully cornering or blocking normal movements
10. Displaying sexually suggestive objects

SECTION II – INITIAL RESPONSE CHECKLISTS

AIRCRAFT CRASH

What to do if an aircraft crashes on or near the school.

Principal:

1. Call 9-1-1 to report the crash and notify District Office.
2. Perform a quick assessment of the situation and determine if immediate evacuation is necessary
3. Establish a Command Post. Minimum Incident Command System Activation recommended: Operations Section, Hazard Control Unit, the Search and Rescue Unit, the Medical Unit, the Assembly Area Unit, and the Student Release Unit.
4. You are the Incident Commander. Begin a comprehensive assessment of the situation and direct resources until emergency response personnel arrive.
5. Upon arrival of emergency responders, form a unified command with them and direct your resources accordingly.

Teachers:

1. Determine if your class is in immediate danger.
2. If the class is in danger evacuate your class to a safe location. If it is safe, stay in your room.
3. If you evacuate, take roll and document absent and/or missing students on class attendance sheet.
4. Move your class to the designated Assembly Area, as directed. Once it has been established.
5. Activate the Buddy System and either remain in Assembly Area to supervise students or report to the Command Post for assignment. Wait for further instructions.

BOMB THREAT

What to do in case of a bomb threat.

Discovering Party:

1. If you receive a bomb threat over the telephone, ask the following:
 - A. When will it explode?
 - B. Where is the bomb right now?
 - C. What does it look like?
 - D. What kind of bomb is it?
 - E. What will cause it to explode?
 - F. Why did you place the bomb?
 - G. What is your address? (Where are you?)Note: They actually may tell you.

H. What is your name?

Principal:

1. Dial 9-1-1 to notify police of Bomb Threat. Contact the District Office.
2. If you believe the bomb threat is credible, do not use a walkie talkie or cell phone. (There are some radio controlled bombs).
3. Determine if you will evacuate the school before conducting a search. Activate the alarm signal (bell-verbal) if you decide to conduct an evacuation.
4. Evacuate to Assembly Area.
5. Minimum the Incident Command System Activation recommended: Operations Section and Hazard Control Unit.
6. In conjunction with the Police Department, direct a search of the campus.

EARTHQUAKE – DUCK, COVER, HOLD

What to do in case of an earthquake.

If inside:

1. Take cover under a desk or strong table, or sit or stand against an inside wall.
2. Stay inside the building. Leaving the building will subject you to falling debris, downed power lines and other hazards.
3. Stay away from windows, glass, bookcases and outside doors.
4. Do not use telephones. Place receivers back on the cradle.
5. If a fire develops, follow the procedures in the Fire Section.
6. Do not light a cigarette or strike a match until gas lines are checked out.
7. Tune to Ventura County Emergency Alert Stations (EAS) include: KHAY 100.7 FM and KVEN 1450 AM.
8. Prepare to evacuate to the Assembly Area, if instructed to do so.

If outside:

1. Move away from buildings and utility wires.
2. Watch for falling glass, electrical wires, poles, trees, or other falling debris.
3. Prepare to relocate to evacuation Assembly Area, if instructed to do so.

Principal:

1. Establish a command post and initiate damage assessment; report to the District Office.
2. If necessary, direct the evacuation of staff and students to assembly areas.
3. Activate a Search Team to check all buildings for trapped or injured staff and students.
4. Ensure that the disabled are assisted in the evacuation.
5. Minimum Incident Command System Activation recommended: Operations Section. Search and Rescue Unit. Assembly Unit. HazardControl Unit. Refer to Section 4. You are now the Incident Commander.

Teachers:

1. Give the **Duck, Cover and Hold** command to students and employees. Duck, cover and hold yourself.
2. When shaking stops, note condition of your neighbors.
3. Determine if an immediate evacuation is necessary (if in your opinion remaining in the building is a hazard). If you do not believe an evacuation is necessary, stay in the building and await further instructions. (Refer to Facility Map for your assigned area.) If you believe an immediate evacuation is necessary, direct an orderly evacuation to your pre-designated Assembly Area.
4. Take your “Go Bag” and roll book to the Assembly Area.
5. Take roll and document absent and/or missing students on class attendance sheet.
6. Teachers are now available to activate the Buddy system and either remain in Assembly Area for student care or report to the Command Post for assignment. (Refer to Section 4).
7. Determine the first aid needs of your class. Prepare to have injured students transported to the Treatment Area, when activated.

FIRE

What to do in case of a fire.

Discovering Party:

1. Activate nearest accessible manual alarm pull box, or notify the office that there is a fire at (**say location**). The Office will call the fire department.
2. Clear everyone from the immediate area.

3. Close – but do not lock all doors leading to fire area to isolate the area and prevent spread of fire.

Principal:

1. Upon knowledge of fire, activate alarm signal (**bell and verbal**) and ensure that 9-1-1 has been dialed. Establish a Command Post and report the fire to the District Office.
2. Supervise the evacuation of staff and students to assembly areas.
3. Direct an employee to check all bathrooms and training rooms for staff and students.
4. Ensure that the disabled are assisted in the evacuation.
5. Minimum Incident Command System Activation recommended: Assembly Unit, Operations Section, and Hazard Control Unit. Refer to Section 4. You are now the Incident Commander.

All Personnel:

1. Do not panic. Remain calm and listen to instructions
2. Do not open hot doors. Before opening any door, touch it near the top to see if it is hot. Do not break windows – oxygen feeds fires.
3. Evacuate when instructed to do so. Take Roll Book and pen and pencils. Use pre-planned evacuation routes (refer to Facility Map), if safe to do so, otherwise use the safest route.
4. Take your “Go Bag” and roll book to the Assembly Area.
5. Call 911 at earliest opportunity.
6. Once in the Assembly Area, do not leave until instructed to do so. Teachers should immediately take roll, document absent, and or missing students on class attendance sheet. Turn attendance sheet in to the Assembly Unit Leader.
7. If the fire is small (no bigger than a desk) use the nearest fire extinguisher to put it out. **Do Not risk personal safety to put out a fire.**

FLOODING

What to do in case of a flood.

Principal:

1. If you are experiencing flooding problems which might affect your school site, contact the District Office.
2. Establish a Command Post and tune to the Emergency Alert Station (EAS) to receive an update on the storm. Tune to 100.7 FM or 1450 AM for EBS.

3. If flooding is imminent, Minimum Incident Command System Activation recommended: Operations Section, Hazard Control Unit (Section 4) and the Logistics Section to begin sandbagging and other property protection measures as required.
4. Determine from the District and local authorities if the school is to be evacuated or closed. If so, activate the Student Release Unit (Section 4) to begin the student release process.
5. Activate other Incident Command System functions as required to support your actions.

Teachers:

1. Keep students indoors until it is determined to be safe.
2. Prepare to evacuate students. Evacuate students to pre-designated Assembly Area if an evacuation is ordered.
3. Take roll and document absent and/or missing students on class attendance sheet.
4. Prepare to release students to the Student Release Unit. Note: Do not release any students until you have completed the Student Accounting Form. Prepare to release individual students according to the student release procedures.

HAZARDOUS MATERIALS INCIDENT

What to do in cases of a Hazardous Materials Incident.

Principal:

In the event that a hazardous material is released in the area of the school, the Police Department and/or Fire Department will determine if an evacuation of the school is necessary. If an evacuation of the school is necessary, you will be instructed where to go and which routes to take. Inform the District Office of the evacuation order and relay any additional assistance needed.

1. Establish and maintain communication with the Police Department and the District's Emergency Operations Center. Establish a Command Post. Minimum Incident Command System Activation recommended: Operations Section, Logistics Section.
2. If an evacuation to another location is imminent, prepare to move students and staff to the designated shelter utilizing available resources
3. Until ordered to evacuate assume that a "shelter-in-place" strategy will be employed and do the following:
 - A. Direct that all students and staff remain indoors until it is safe.
 - B. Direct that all heating-ventilation and cooling units are shut down.
 - C. Direct that all windows are shut.

Teachers:

1. Upon notification that a hazardous materials incident has affected the school, keep calm while preparing for an evacuation to another location, if directed.
2. Keep students calm.
3. Close all classroom doors and windows.
4. Ensure that the heating-ventilation and cooling system is shut down.
5. Unless otherwise instructed, assume that a “shelter-in-place” strategy is being utilized. Keep all students indoors until it is determined to be safe.

LOCK DOWN

What to do in case of a lock down.

All personnel:

1. First person to become aware of the situation should use the telephone’s “page” to notify all staff.
2. Person at front desk locks the lobby doors.
3. All staff grab cell phones or emergency bags and meet in Lockdown Assembly Area.
4. At the Lockdown Assembly Area the person with the most responsibility assigns person to call 911.
5. Report medical emergency to Incident Commander.
6. Await instructions.

Incident Commander:

1. Ensure that 9-1-1 has been called.
2. Provide emergency First Aid. Utilize the school nurse if available. Activate the Medical Unit if there are multiple casualties.

Direct responding emergency personnel to the victim(s).

MEDICAL EMERGENCY

What to do in case of a medical emergency.

All personnel:

7. If situation is life threatening, Dial 9-1-1.
8. Report medical emergency to School Principal.

9. Await instructions.

Principal:

3. Ensure that 9-1-1 has been called and report medical emergency to District Office.
4. Provide emergency First Aid. Utilize the school nurse if available. Activate the Medical Unit if there are multiple casualties
5. Direct responding emergency personnel to the victim(s).
6. Isolate staff and student from the victim(s).

NUCLEAR ATTACK

What to do in case of a nuclear attack.

This plan is designed to provide direction in the unlikely event a nuclear weapon detonates away from the city. The blast effect is assumed to not threaten the City. The hazard of such an incident is the associated radioactive fallout. (Note: Due to Electromagnetic Pulse, electronic and communication equipment may fail).

Principal:

1. Establish and maintain communication with the District's Emergency Operation Center (EOC). Establish a command Post. Minimum Incident Command, System Activation recommended: Operations Section, Logistics Section and Facilities Unit.
2. Direct the Facilities Unit to begin locating food and water.
3. Direct the Facilities Unit to begin protecting each building containing people for nuclear fallout. Any object placed between the fallout and people can help to reduce exposure.
4. Direct that all heating-ventilation and cooling units be shut down.
5. Direct teachers to keep students within the interior walls of each building.
6. Keep all staff and students indoors until it is determined by the Ventura County Health Department that it is safe.
7. Maintain communication with the District Emergency Operations Center to receive updates. Tune to the Emergency Alert System (EAS) at 100.7 FM or 1450 AM to receive updates.
8. Upon receiving the "all clear." activate the Student Release Unit (page 28).
9. Activate Incident Command System units as required to accomplish necessary functions.

Teachers:

1. Keep students on the interior walls of the classroom.
2. Keep students indoors until it is safe to leave. Refer to the Hazardous Materials Incident Section for more information (page 11).
3. Take roll and document absent and/or missing students on class attendance sheet.
4. Upon receiving the “all clear,” prepare to release students to the Student Release Unit.

PANDEMIC FLU

Outbreak of Flu Disease – less than 10% students

District Incident Commander:

1. Begin Heightened Surveillance Reporting. **Send out Parent Letter #2 – Bird Flu**, when bird flu case(s) are confirmed in Ventura County. Can also send Tips for Parents on Prevention flyer.
2. Inform parents that some students are sick but schools remain open, include tip sheets and information resources. **Send out Parent Letter #3 – Initial Outbreak**, when schools remain open. Can also send Tips for Parents on Prevention flyer.
3. Work with Ventura County Public Health regarding a Press Release announcing schools remain open but parents need to prepare/Use key messages – Open School.

Site Incident Commander:

1. Post flu prevention signs on campus.
2. Implement action plan for decreased work staff as the need arises in each department.

Expansion of the Outbreak – 10% or more of students ill (but less than 30%)

District Incident Commander:

1. Local Health Officer issues ADA Support Letter to schools / Epidemic Declaration.
2. Begin Intensive Surveillance Reporting.
3. Inform parents of tips on keeping children well and how to prevent the spread of germs. **Use Parent Letter # 4 – Expanded Outbreak**, when school remains open. Can also send Tips for Parents on Prevention flyer.

Continued Expansion of the Outbreak – more than 30% of students ill

District Incident Commander:

1. Ventura County Public Health Officer issues Declaration and press release closing schools(s).
2. Close school.
3. Announce school closure; send out **Parent Letter #5 – School Closure**. Use other common methods to efficiently and effectively inform parents / guardians.
4. Cancel any non-academic events.

Following the Outbreak

District Incident Commander:

1. Ventura County Public Health issues declaration and press release that schools can open.
2. Announce school open, send **Parent Letter # 6 – School Open**. Use other common methods to efficiently and effectively inform parents / guardians.
3. Continue communication between Ventura County Office of Education and Ventura County Public Health regarding status.
4. Return to heightened surveillance reporting.
5. If students get sick again, restart checklist at Outbreak section.

RIOT/CIVIL DISORDER

What to do in case of a riot or civil disorder.

All Personnel:

1. **If disturbance is off campus**, as much as possible, remain in your work area and maintain your normal work routine.
 - A. Wait for further instructions indicating if campus is in a lock down situation. “Teachers, we are initiating a school lock down. This is not a drill.” Once the campus is secure you will hear: “The school lock down is over. This is not a drill”.
2. **If rioters enter your area:**
 - A. Initiate lock down procedures
 - Remain calm and lock all doors and close window blinds.
 - Avoid window areas if possible.
 - Do not leave your building or work area unless you feel you are in imminent danger.
 - If you do leave the building, avoid any interaction with **rioters**.
 - Await further instructions.

Principal:

1. Direct a lock down of the campus if you believe the situation warrants.

2. Consult with the Police Department and the District to coordinate appropriate protection for the school and its personnel.
3. Establish a Command Post
4. Inform teachers and staff of the emergency situation. If appropriate, use the public address system.
5. Minimum Incident Command System Activation Recommended: Operations Section. and Hazard Control Unit to staff Security Team.
6. Do not permit staff or student to leave the school until you have determined it to be safe. Direct the careful screening of all persons entering the school facility. If appropriate, use the public address system.

SUSPICIOUS INDIVIDUAL OR CRIMINAL ACTIVITY ON CAMPUS

This checklist is designed to address unknown individuals who are exhibiting suspicious or potentially threatening behavior or obvious criminal activity.

Discovering Party:

1. Notify office of unfamiliar individual and report their location and behavior
2. If the individual appears dangerous or is involved in criminal activity, avoid contact and move to a safe location.

All Personnel:

1. When informed of a suspicious individual or activity on campus, the words “We are initiating a school lock down. This is not a drill” will be used. Initiate lock down procedures and await further instructions.
 - Remain calm and lock all doors and close window blinds.
 - Avoid window areas if possible
 - Do not leave your classroom or work area.
 - Await further instructions.
2. No staff or students will be permitted to leave the school until it is safe. During lock down, communicate any suspicious activities or noises to the office. This information may be useful to authorities. Once it has been determined it is safe, the words “The school lock down is over” will be used.
3. If the intruder enters your area:
 - A. Do not provoke an incident.
 - B. Remain calm and do not get involved. Leave or avoid the area.

Principal:

1. If you believe it is safe, approach the individual and assess the individual’s business. You should be accompanied by another adult staff member, if at all possible. Explain the school visitor policy.
2. If suspicious or criminal activity has been reported, immediately dial 9-1-1 and contact the District Office.

3. Consult with the Police Department and district to coordinate appropriate protection for the school and its personnel.
4. Inform teachers and staff of the emergency situation. If appropriate, use the public address system and direct a lock down of the campus.
5. Activate the Incident Command System and attempt to monitor the situation without putting staff in jeopardy. Await the authorities.
6. Do not permit staff or students to leave the school until you have determined it to be safe.
7. As appropriate, use the public address system to end the school lock down.

TSUNAMI

What to do if a tsunami occurs in the area.

Principal:

1. Upon notification, immediately evacuate students/faculty to higher ground or move inland away from the coastline.
2. Establish a Command Post. Minimum Incident Command System Activation recommended: Operations Section, Search and Rescue Unit, the Medical Unit, the Assembly Area Unit, and the Student Release unit.
3. You are the Incident Commander. Begin a comprehensive assessment of the situation and direct resources until emergency personnel arrive.
4. Upon arrival of emergency response personnel, form a united command with them and direct your resources accordingly.
5. Wait for further instructions.

Teachers:

1. Upon notification from Incident Commander evacuate students to higher ground or move inland away from the coastline.
2. Take roll and document absent and/or missing students on class attendance sheet.

Activate the Buddy System and either remain in the Assembly Area to supervise students or report to the Command Post for assignment. Wait for further instructions.

UTILITY FAILURE

What to do in case of a utility failure.

Principal:

1. Assess if utility failure presents a threat to safety, if so contact 9-1-1 immediately.
2. Notify District Office and District Maintenance Department.

3. Contact the appropriate utility company if directed.
Southern California Edison 529-1524
Southern California Gas Company 1-800-427-0044
 1-213-244-8900
4. Determine if any power lines, sewer lines, water lines, or gas lines are down or ruptured at the school; if so, activate the Incident Command System Hazard Control Unit to isolate the area.
5. Determine if an evacuation of classrooms is necessary.

Teachers:

1. Open window shades and use emergency flashlights as necessary.
2. Prepare to relocate your class to your pre-designated Assembly Area.

SECTION III – POSITION RESPONSIBILITIES

ASSEMBLY/SHELTER UNIT

Personnel: Teachers, available staff

Responsibilities:

- Obtain “Go Bag” and any safety equipment if necessary.
- Review procedures/assignments with personnel.
- Establish point of entry into the Assembly/Shelter Area.
- Establish and demarcate the student Assembly/Shelter Area with cones and flagging ribbon.
- Instruct teachers to have students to sit on ground. Take roll and document absent and/or missing students on class attendance sheet.
- Buddy teachers should establish contact with each other. Teacher with lead or staff assignment, will “hand off” responsibility for the class to the buddy teacher and report to the emergency assignment.
- Instruct teachers to report immediate first aid needs to you.
- After all classes are accounted for, take Classroom Attendance Sheet to the attendance table.
- Ensure that teachers supervise and reassure students
- Once the Treatment Area has been established, make arrangements with the Treatment
- Area to transport any students needing medical attention.
- Be alert for latent signs of injury/shock in all students.
- Prepare for student release. Do not release students directly to parents or guardians. Students are to be released only to the Student Release Unit
- Team leader makes periodic status report updates to Incident Commander.

Assembly/Shelter Unit Equipment/Supplies:

1. Go Bag
 - A. Emergency Response Plan
 - B. School Disaster Cap and Identification Vest
 - C. Clipboard and appropriate paperwork & forms
 - D. Pens, Pencils and Markers
 - E. Class Roster and buddy Roster
 - F. Updated school wide attendance roster

2. Two-way Radio
3. Traffic Cones/flagging ribbon
4. Table & chairs for attendance table
5. Games/books etc. to entertain children

***Request all other resources through Logistics**

DEPUTY INCIDENT COMMANDER

Personnel:

Responsibilities:

- Obtain your “Go Bag” (Emergency Response Plan, hard hat, job description sheet).
- Report to the Incident Commander.
- Your Primary responsibilities are to assist the Incident Commander.
- Assist the incident commander in reviewing and accomplishing the items in the Incident Commander Checklist.
- Stand in as the Incident Commander at the Command Post when he/she is away.

NOTE: The Deputy Incident Commander does not have the authority of the Incident Commander. Receive and relay information to the Incident Commander when they are away from the Command Post or on break.

If the Incident Commander leaves the School, he/she must appoint a new Incident Commander.

Deputy Incident Commander Supplies:

1. Go Bag
 - A. Emergency Response Plan
 - B. School Disaster Cap and Identification Vest
 - C. Clipboard and Legal Pads
 - D. Pens, Pencil and Markers
2. AM/FM Radio
3. Two-Way Radio

***Request all other resources through Logistics**

FACILITIES UNIT

Personnel: Teachers, janitors, maintenance staff

Responsibilities: The Facilities Unit is activated to set up and maintain all of the incident facilities to include: the command post, the sanitation area, the supply checkout area, the student request and release gates, the staging area, medical treatment areas, and any other functional areas activated by the Incident Commander.

- Receive a briefing from the Logistics Chief/Incident.

- Determine requirements for each facility to be established.
- Prepare layouts of incident facilities. Request assistance, if needed, from the Incident Commander.
- Activate the required facilities (See facility map on page 42 for proposed facility locations):
 - Sanitation Area (see reference section).
 - Command Post
 - Shelter Areas
 - Staff Area
 - Assembly Area
 - Student Release Gate
 - Morgue
 - Treatment Area
- Communicate status updates with Logistics Section Chief/Incident Commander.

Equipment/Supplies:

1. Go Bag
 - A. Emergency Response Plan
 - B. School Disaster Cap and Identification Vest
 - C. Legal Pads
 - D. Pens, Pencils and Markers Table and Chairs
 - E. Clipboards

FOOD UNIT

Personnel:

Cafeteria staff

Responsibilities:

- Determine food and water needs.
- Coordinate food and water needs with the District's Logistics Section.
- Setup cooking facilities as required.
- Setup an area for the feeding of students and staff.

Equipment/Supplies:

1. Go Bag
 - A. Emergency Response Plan
 - B. School Disaster Cap and Identification Vest
 - C. Legal Pads
 - D. Pens, Pencils and Markers
 - E. Clipboards
2. Food and water
3. Paper plates, cups, napkins, plastic utensils
4. Flashlights

***Request all other resources through Logistics**

HAZARD CONTROL BRANCH

Personnel: Custodial, Grounds staff and staff made available by buddy system-

Responsibilities: This Unit is responsible for the following functions

1. Fire Suppression
2. Utility Control
3. Hazards Isolation

As you do the following, be alert – report any damage to the Operations Section Chief at the Command Post:

- Take no action that will endanger yourself.
- Report to ‘Command Post’ (CP).
- Obtain hard hat, identification vest, this checklist, a clipboard and a radio.
- Locate/control/extinguish fires as necessary.
- *If necessary*, shut down gas supply.
- Shut down water and electrical only if advised to do so by Command Post.
- Post **HAZARDOUS AREA – DO NOT ENTER – KEEP OUT** tape around damaged or hazardous area.
- Advise Command Post of all actions taken.
- Report back to Command Post for reassignment.

Equipment/Supplies:

1. Go Bag. (Get Hazard Control Bag supplies from Logistics).
2. Master Key(s)
3. Shutoff tools – gas & water
4. Fire extinguishers

***Request all other resources through Logistics**

INCIDENT COMMANDER

Personnel: Principal, Vice Principal, or Lead Teacher

Responsibilities:

- Remain calm. Lead by example: your behavior sets tone for staff and students.
- Obtain your “Go Bag” i.e.. Emergency Response Plan, hard hat, vest, clipboard (with job description sheet).
- Determine the nature and extent of the emergency. (I.e.. localized to your campus with expectation of outside help, or major area disaster with little expectation of immediate assistance).

- Verify that Assembly Area is still safe.
- Establish a Command Post.
- Activate the appropriate components of the emergency organization (Command, Operations, Logistics. etc.)
 - Will you need assistance as the Incident Commander? Assign a Deputy Incident Commander.
 - Will you need Search and Rescue, Medical or Hazard Control? Assign an Operations Section Chief to oversee these branches.
 - Will you need to order resources. ie.. food, sandbags, water. etc.? Assign a Logistics Section Chief.
- Using the “Incident Assignments” form (page 18-19), assign staff and volunteers to functions that are required to respond to the incident. Fill only the positions that are necessary to appropriately respond to the emergency. As the incident evolves, it will be necessary to reassign people to different positions and to activate and deactivate functions.
- The principal is solely responsible for emergency/disaster operations and should, if at all possible, remain at the command post to *observe and direct* all operations.
- Assess total school situation:
 - View Site Map periodically for Search and Rescue progress and damage assessment information
 - Check with team leaders for periodic updates.
 - Reassign personnel as needed.
 - Think about information to be released by Public Information Officer (PIO) and how to release that information. (The District will assist you with this task).
- Ensure District EOC is receiving periodic status report updates.
- Monitor local emergency radio station for local news.
- Authorize student release when appropriate.

NOTE: No student should be released until student accounting is complete. **In a major emergency, DO NOT send students home at the end of the regular school day, except through the Student Release procedure, or unless directed by the District Office.**

- Plan regular breaks for all staff and volunteers. **Take care of your caregivers and yourself!**

- Release school site employees as appropriate per district guidelines. By law, during a disaster, all school site employees become “Disaster Service Workers.” All employees shall remain on site through the conclusion of the work day to ensure adequate student supervision and safety in the Assembly area and staffing of the Student Release Unit. Use your discretion in determining which employees to release or retain at the end of the work day based on school safety needs and the personal circumstances of individual employees. (i.e. child care, notification of family emergency, transportation. etc.).
- Remain on and in charge of your campus until redirected or released by the District Office or Emergency Operations Center.

Incident Commander Supplies:

1. Go Bag
 - A. Emergency Response Plan
 - B. School Disaster Cap and Identification Vest
 - C. Clipboard and Legal Pads
 - D. Pens, Pencils and Markers
 - E. Scotch Tape/Masking Tape
 - F. Scissors
 - G. Cassette recorders with blank tapes and batteries
 - H. Emergency Information Forms
 - *Sample News Release
 - *General School Information (student/staff population)
2. School Site Cellular Phone
3. Two-Way Radio

***Request all other resources through Logistics**

LOGISTICS SECTION CHIEF

Personnel: Teacher

Responsibilities:

- Obtain cap and identification vest
- Review all Emergency Checklist items and assign/delegate responsibility to subordinates
- Obtain briefing from Incident Commander
- Activate and staff subordinate units, as required
- Direct the opening of the disaster storage container.
- Brief subordinates, as necessary.
- Process incoming requests for support. Make sure other functional areas are involved as necessary.
- Adopt a proactive attitude. Think ahead and anticipate situations and problems before they occur.

- Support the activation of required facilities (see Facilities Map on page 42 for proposed facility locations):
 - Sanitation Area
 - Command Post
 - Shelter Areas
 - Staff Rest Area
 - Assembly Area
 - Student Release Gate
 - Morgue
 - Treatment Area
- Determine the extent of current and anticipated field operations and plan necessary logistical support.
- Provide, maintain and control equipment, supplies, facilities and commercial services required by incident.
- Coordinate and process requests for additional resources with District Logistics Section Coordinator.

Disaster Bin Supplies:

Administrative Supplies

Clipboards
 Pens, Pencils, Markers
 Scissors, Masking Tape
 Identification Vests
 Whistles
 Bull Horn

Extra Radios and Cell Phones (May be stored in principals office).

Search and Rescue Supplies:

S&R Bags contain:

First aid supply
 Flashlights (2)
 Pencils, Fat Sharpies, Large Chalk
 Steno pad
 Goggles (2), Dust Masks (2), Gloves (2), Hard hat
 Duct Tape (2-inch)
 18 inch pry bar

General S&R equipment available upon request for all units:

Hard hats
 Goggles
 Dust Masks
 Gloves
 Pry bars
 Flashlights
 Batteries

Shovel
Fire Ax

Hazard Control Supplies:

Hazard Control Bag contains:
Emergency Response Plan
Identification cap and Identification vest
Clipboard with job description checklist
Pens, pencils and markers
Flashlight
First Aid Kit
Dust Mask, Gloves, Goggles, Hard Hat
“Hazard Area” tape and “Keep Out” tape

Medical Supplies:

Medical Treatment Victim Logs
Notice of First Aid Care Form
S.T.A.R.T. Field Guide
Ground Cover/Tarps
Quick Reference Medical Guides
Triage Tags
Medical Supplies to augment supplies in “Go Bags”
Cots and Blankets

Cot and Shelter Supplies:

Traffic cones/Flagging Ribbon
Food and water
Cots and blankets or space blankets

Sanitation Supplies:

Rolls of electrical wire
Stainless spring clamps
Black polyethylene sheeting
Portable toilets
Toilet Paper and T.P. holders
Spare toiletsbags
5 gallon urinal buckets
Bucket liners
Shovels
Lye and or Bleach
Hand wash

MEDICAL BRANCH

Personnel: School nurse, available staff

Responsibilities:

- Obtain personal safety equipment (hard hat, surgical gloves, mask, safety glasses, identification vest).
- Determine appropriate area for medical treatment. Consider:
 - Separation from assembly area & student “request/release” gates
 - Accessibility for S&R teams
 - Safe distance from buildings
- Medical team leader assigns personnel duties per form (see p. 46).
- Obtain equipment/supplies from the container.
- Be familiar with available inventory.
- All personnel wear identification vests.
- Quickly review procedures/assignments with personnel.
- Establish point of entry into treatment area.
- Establish “immediate” and “delayed” treatment areas.
- **Initiate Triage.** (Consider having Search and Rescue Team assist with triage).
- Prepare to receive victims.
- Team leader makes periodic status reports to Operations Section Chief

Triage Entry Area:

- Staffed with minimum of 2 trained team members.
 - One member confirms triage tag category (red, yellow, green) and directs to proper treatment area. Should take 30 seconds to assess — no treatment takes place here. Victims not tagged will be considered “delayed” and sent to appropriate treatment area.
 - Second team member logs victims on form (see page 58 and sends forms to Command Post as completed).

Treatment Areas (“Immediate” & Delayed”)

- Staffed with minimum of 2 team members per area.
 - One member completes secondary head-to-toe assessment.
 - Second member records information on triage tag and on-site treatment records (see page 48).

- Administer appropriate first aid. Keep accurate records of care given!!
- Continue to assess victims at regular intervals and document care given.
- Communicate with the Incident Commander to determine time line for outside emergency medical support and transport needs.
- If and when transport available, do final assessment and document on triage tag **in red** (if possible). **Keep and file records for reference — do not send with Victim.**
- Communicate with the Incident Commander to establish morgue area, as necessary.

Medical Unit Equipment/Supplies:

1. Go Bag
 - A. Emergency Response Plan
 - B. School Disaster Cap and identification Vest
 - C. Clipboards marked Medical” with appropriate paperwork & forms
 - D. Pens, Pencils and Markers
 - E. Triage Tags & Triage Procedure Guide
 - F. Quick reference medical guides
2. Two-way Radio
3. Training manuals
4. Medical supplies
5. Tables & chairs
6. Ground cover/tarps (different colors for treatment areas)
7. Signage for treatment areas.

***Request all other resources through Logistics**

Mortality Management Guidelines

Personnel: The County of Ventura Chief Medical Examiner – Coroner has Coroner responsibilities through out the County of Ventura. In a wide-scale disaster within Ventura County, it may be several hours or days before the dead can be collected and processed by the Department of the Chief Medical Examiner-Coroner. Law Enforcement has the ultimate responsibility for carrying out this function if the County Coroner cannot respond. Individuals assuming the Coroner’s role will do so only with the instruction and authorization of the County Coroner. Make arrangements with the District for such authorization.

PUBLIC INFORMATION OFFICER (PIO)

Personnel: The School District will provide staff to fill this position. The Incident commander will follow these guidelines as a PIO until relieved by District staff. In extreme circumstances when District personnel are not available, the Incident Commander must determine whether to delegate this assignment to a trusted staff member or perform the role themselves.

Policy: The public and especially parents have the right and need to know important information related to emergencies/disaster at the school site ***as soon as it is***

available. The Public Information Officer acts as the official spokesperson for the school site in an emergency situation. News media can play a key role assisting the school in getting emergency/disaster related information to the public and parents. Media representatives are therefore treated with respect.

Responsibilities:

- Predetermine a possible “news center” site to serve as a media reception area (located away from the Command Post).
- **Consult with district PIO to coordinate information release and before making any statements.**
- Assess the situation and obtain a written statement. Prepare a written Statement/Press Release and have it approved by the Incident Commander or District PIO. Read it to the media, if at all possible.
Statement should reflect:
 - Reassurance – “Everything is going to be OK.”
 - Incident or disaster cause and time of origin.
 - Size & scope of the incident.
 - Current situation – condition of school site, evacuation progress, care being given, number of injuries and deaths, general nature of injuries, student release location, shelter information, etc. **Do not release names of students or staff.**
 - Resources in use.
 - Best routes to approach school if known.
 - Request any school wishes to be made to the public.
- Advise arriving media that press release is being prepared. Give approximate time of its issue.
- Arrange for a media center site.
- When answering questions after the press release, be complete & truthful always considering confidentiality & emotional impact. Avoid speculation, bluffing, lying, talking “off the record,” arguing, etc. Avoid use of the phrase “no comment.”
- Direct school site/staff volunteers to refer *all* questions from media/waiting parents to the PIO.
- Determine whether formal written or verbal communications to parents needs to be translated into Spanish.
- Monitor all news broadcasts about incident. **Correct any misinformation heard.**
- Keep a log of your actions, communications, and phone calls, e.g. page 45. **If at all possible, tape media and parent briefings.**

PIO Supplies:

4. Go Bag
 - A. Emergency Response Plan
 - B. School Disaster Cap and Identification Vest
 - C. Clipboard and Legal Pads
 - D. Pens, Pencils and Markers
 - a. Scotch Tape/Masking Tape
 - b. Scissors
 - c. Cassette recorder with blank tapes and batteries
 - d. Emergency Information Forms
 - *Sample News Release
 - *General School Information (student/staff population)
5. AM/FM Radio
6. Signage to identify media area or center
7. Portable easel with flipchart

***Request all other resources through Logistics**

SEARCH AND RESCUE BRANCH

Personnel: Custodial, Grounds Staff and staff made available by buddy system. Teams to be assigned by Operations Section Chief, minimum of 2 persons per team

Responsibilities:

- Follow all operational & safety procedures in this plan.
- Obtain all necessary safety equipment – remember sturdy shoes, long sleeves.
- Use clipboard with pre-drawn area to be searched.
- Check with Operations Section Chief for **known** injuries, hazards, specific information **before** leaving the Command Post.
- Size up assigned area. Check for hazards before entering any room.
- Before entering room, put single slash (\) on wall adjacent to doorknob side of door.
- Search **visually and vocally. Listen!**
- Exit room, complete search marking (X) on wall.
- Report significant findings to Operations Section Chief as necessary.
- If you find individuals trapped in a room determine if you can safely extract them. If you can not, go back to Operations Section Chief to report location, situation and get assistance. If you can safely extract them, take

injured people to the Treatment Area and uninjured people to the Assembly Area.

Search & Rescue Equipment/Supplies:

1. Master keys on neck lanyard
2. S&R Bag with:(Obtained from Logistics)
 - A. Emergency Response Plan
 - B. School Disaster Cap and Identification Vest
 - C. Job description clipboards with map of search area
 - D. Long Sleeve Shirt & Hard sole shoes
 - E. First aid supply backpack
 - F. Flashlights (2)
 - G. Pencils, Permanent “FAT” marker (2), Railroad crayons (large chalk)
 - H. Steno pad
 - I. Goggles (2), Dust masks, Gloves (2), Hard Hat
 - J. Duct Tape (2-inch)
 - K. 18-inch pry bar

***Request all other resources through Logistics**

SECURITY BRANCH

Personnel: Custodial Grounds Staff and staff made available by buddy system

Responsibilities: Your primary responsibility is to:

- Ensure the safety and security of school staff and students.
- Monitor safety and security of facilities.
- Coordinate with Local Law Enforcement, Fire, and Rescue personnel for assistance when necessary.
- Take no action that will endanger yourself.

- Report to the Command Post.

- Obtain hard hat (if necessary), Identification cap or vest, this checklist, a clipboard and a radio,

- If directed to do so, lock gates and major external doors.

- Verify that campus is “locked down” and report same to Command Post.

- Advise Command Post of all actions taken.

- Route Fire, Rescue, Police, etc. as appropriate.

Equipment/Supplies:

1. Go Bag
 - A. Emergency Response Plan
 - B. School Disaster Cap and Identification Vest
 - C. Legal Pads
 - D. Pens, Pencils and Markers
 - E. Clipboard
2. Two-way radio

3. Hard hat (if necessary)

***Request all other resources through Logistics**

SECTION IV – SITE EMERGENCY PLAN

EMERGENCY PLAN DIGEST

Communications

*Shahida Chaudhry
Miriam Macias
Rosemary Alvara

Rescue Team/Mortuary

*Leticia Medina
Sobieda Villaseñor

First Aid

*Bertha Mendoza
Esperanza Robles

Student Control

*Merced Robles
Esther Ordaz

Reunion Gate

*Carrie Clark

Health & Comfort Team

*Leticia Medina
Sobieda Villaseñor
Esperanza Robles

Sanitation

Rosemary Alvara

Phase II: All staff except for those in charge of Student Control will be asked to report to Communications.

*First name to appear for assignment will be in charge and so on...

EMERGENCY PLAN

Definition

This plan is to be observed any time that students are required to evacuate their classrooms following a disaster such as an earthquake, flood, fire, plane crash, chemical spill, pipe leak and explosion.

Procedure

In case of earthquake, students indoors should drop, cover, and hold and take cover under desks or tables, away from windows and sliding objects. Drop, cover, and hold.

If outdoors, move to an open area away from buildings, trees, power lines and walls, making oneself as small as possible.

Staff will direct their classes to Drop-Cover-Hold at the first signs of an earthquake. When they feel it is safe, evacuate classroom.

Phase I:

1. Classrooms:

Staff needs to evacuate their students to the Student Control-General Assembly area with their disaster bag containing **ID tags** and disaster plan, **as soon as they determine it is safe**. Take attendance binder. Student identification tags are to be handed out to each student and roll is to be taken to ensure that all students/staff/tutors/volunteers are accounted for.

Place outside the classroom: *Water Jug

2. Office Staff: Evacuate and take:

- First Aid Kit
- Emergency cards
- Student sign-out book
- Current Class List
- Current Emergency Cards
- Student Information
- Daily lunch/attendance count
- 2-way radios

Arrange set up of barrels and other equipment.
Take attendance and send to Communications Center.

3. Attendance

- Take attendance – using form
- Report missing students and staff to Communications.
- Report injuries to Communications.
- All subs must report to Communications to get assignments.

4. Individual Teacher Responsibilities

- Execute “DROP, COVER, HOLD DRILLS”.
- Evacuate classrooms and regroup at designated areas on the playground. (Students should be able to evacuate independently in case adults cannot evacuate.)
- Be prepared for aftershocks.
- Determine if first aid is needed for anyone who might be injured. See that injured individuals get proper first aid treatment.

*Once the staff’s immediate obligation to the classroom students is met, stand by for further directions.

5. Disaster Bags: Place Disaster Plan, class list, first aid supplies, whistles, flags, tennis shoes, medication, glasses, and sweat clothes in Disaster Bag. Include paper and pencil. A small amount of supplies such as scissors, tape, crayons and paper might also be helpful.

Portable First Aid Kits (Disaster Bags)

Recommended item	Required	Inventory	Shortage
Carrying case	1		
Bandage, Triangular, Muslin	2		
Bandage, Gauze Roller, 2” x 6 yards	12		
Blades, Razor, Single Edge	1		
Cups, Paper, Drinking	10		
Dressing, First Aid, Small 4” x 7”	10		
Dressing, First Aid, Small 8” x 7 1/2”	3		

Dressing, First Aid, Small 11 1/2 Square	1		
Pencil, Writing	1		
Pins, Safety	10		
Splints, Cardboard 4" x 18"	4		
Tags, Emergency Medical Services	20		
Scissors, Bandage	1		
Adhesive Tape, Roll	2		
Cotton, Sterile, Absorbent, Box	2		
Butterfly Bandages, Box	1		
Ace Bandages	4		
Additional Supplies: Tweezers, Eye Cups, Eye Aid Liquid (1/2 oz), Ammonia Inhalants, Wrap, Cotton Roll, 12" Flashlight with spare batteries (2 each), Tongue Depressors (Finger splints) Dressing, First Aid 3" x 4" , Dressing, First Aid 2" x 2", Dressing, First Aid 3" x 3"			

First Hour Priorities

During the first hour after an earthquake, the Director, teachers and other staff members must handle many important tasks:

- Attend to the first-aid needs of injured students and school personnel.
- Account for all students.
- Locate missing students and personnel.
- Extinguish small fires before they get out of hand (use fire extinguisher).
- Check for damages to the utility systems and appliances; if necessary, shut off electrical power, and water.
- Seal off and identify areas where hazardous materials have spilled.
- Calm and reassure frightened students.
- Provide all students with identification tags.
- Keep records of students released to parents or other authorized persons.
- Establish communication with emergency assistance and school district officials.

Duties Definition

1. Reunion Gate

- Remain at OVEES until parents or School District transportation picks up the students.
- Parents must meet their children at the gate to sign them out.
- Move to alternate location if buildings are destroyed (Ocean View School District Shelter is located at Ocean View Jr. High Gym).

2. Fire Suppression/Facility

- Shut off valve on water heaters to preserve water. Shut off water valve to the building, if needed.
- Know the location of fire extinguishers, blankets, and emergency kits.
- Extinguish small fires, if there is a major fire, relocate.

3. Rescue

- ◆ Senior person present is in charge.
- ◆ Remove victim from danger zone, apply first aid as needed and take victim to the first aid station
- ◆

4. First Aid

- ◆ CPR and First Aid certified staff are to treat injuries in their designated areas.

5. Sanitation

- ◆ If water is running, use inside toilets.
- ◆ If water is not running, dig a trench away from the food area.
- ◆ Use a ladder as a toilet seat.
- ◆ Pour lime chemicals periodically into trench.

6. Health & Comfort

- ◆ The Housekeeper will conduct a food inventory, and sanitize the kitchen area.
- ◆ Assign an alternate person to take the Housekeeper's responsibilities, if the Housekeeper is absent.
- ◆ Prepare and serve meals
- ◆ Provide sleeping arrangements – Shelter Assignments
 - ◆ Set-up
 - ◆ Inventory
 - ◆ Sanitation
 - ◆ Clean-up

7. Student Control

- STEP 1. Maintain discipline
- STEP 2. Implement activities to keep students calm
- STEP 3. Encourage positive morale

8. Mortuary

- Bodies are to be tagged by staff with name and time of death.
- Bodies are to be placed in a bag and taken to the storage shed.

9. Communication

- ◆ Senior person present in charge
- ◆ If the phone works, use for communication or use cell phone
- ◆ Wait for instructions from District. Attend to injured children and Staff.
- ◆ Public relations – direct parents to a public disaster shelter. (Ocean View Junior High Gym will be a shelter). The school will not be able to care for incoming families.
- ◆ Correlate duties with OVEES and OVSD "Emergency & Disaster Plans"

10. Medical Tasks for a Major Emergency (Earthquake)

- ◆ Identify each medical emergency card and information cards for all students and staff.
- ◆ Identify students and staff who have allergies or diseases (diabetes, etc).
- ◆ Provide First Aid training for all staff. (Students above Seventh Grade).
- ◆ Keep a 72-hour water supply on hand for all students and staff.
- ◆ Prepare and store portable first aid kits (see attached list in progress).

- ◆ Conduct earthquake response drills for students on a monthly basis.

**Guidelines for Putting Together A Well Balanced
2-Week Emergency Food Supply**

Type of Food	Amount per Person		Useful Buying
	One Day	Two Weeks	
Milk	2 Cups	7 quarts	1 qt. Milk is equal to: 14 oz. Can Evaporated Milk 3-3 1/2 oz. Dry Milk
Cheese	1-1/3 oz.	1 lb. 3 oz.	
Canned Meat, Fish or Poultry	2 Servings	28 servings	One serving equals: 2-3 oz. Meat, poultry, fish 3/4 oz. Dried Meat
Dried Eggs			2 eggs, dried
Cooked Dry Peas & Beans			6 oz. Mixture with rice, vegetables, etc.
Nuts			1/2 cup nuts 4 tbsp. nuts
Fruits & Vegetables	2-4 servings Serving = 1/2 cup	42-46 servings (5-7 lbs.)	One serving equals: 4 oz. Canned Fruits, vegetables 1 1/2 oz. Dried Fruits 4 – 8 oz. Canned Juice
Juices: Orange, Grapefruit, Tomato (Vitamin C source)	1/2 cup – 1 cup		
Cereals and Baked Goods	3/4 servings Serving equal: 1 slice bread 1/2 – 1 cup dry cereal 1/2 cup cooked rice 6 squares graham crackers 2 rye wafers	42-56 servings (5-7 lbs.)	One serving equals: 1/2 – 1 oz. Dry cereal 1 oz. Crackers 1 oz. Cookies 3/4 oz. Pasta 3/4 oz. Rice
Crackers & Cookies			

**Guidelines for Putting Together A Well Balanced
2-Week Emergency Food Supply
(Continued)**

Type of Food	Amount per Person		Useful Buying
	One Day	Two Weeks	
Fats & Vegetable Oils Juices: Orange, Grapefruit, Tomato (Vitamin C source)	2-4 servings Serving = 1/2 cup 1/2 cup – 1 cup	Up to 1 lb. Or 1 pint per person	Amounts depend on extent of cooking possible. Choose types requiring no refrigeration.
Salt Sugar Flour	2 tsp. 2 tsp. 1 oz.	4 oz. (1/4 lb.) 4 oz. (1/4 lb.) 1 lb.	1 lb. Box for four person 1 lb. Box for four person 5 lb. Bag for 4-5 persons
Sweets		1/2 lb.	Hard candy, gum, jam, jellies, instant puddings, syrup, honey, etc.
Miscellaneous	According to family practices and extend of cooking possible		Coffee, tea, cocoa, seasoning, instant creamer, bouillon products, soda, vinegar, baking powder, mustard, catsup, etc..

Avoid foods that increase thirst. One meal servings will discourage spoilage resulting from unrefrigerated leftovers. Because of lack of refrigeration, avoid using foods, which spoil quickly, like mayonnaise, salad dressings, creamed foods, etc.

Purification of water for drinking in an emergency may be accomplished by any of the following methods:

- Boil water for five to ten minutes.
- Add ten drops of household bleach solution per gallon of water, mix well, and let stand for 30 minutes. (Slight smell or taste of chlorine indicates water is alright to drink.
- Add household tincture of iodine in same manner as household bleach.
- Commercial purification tablets such as Halazone or Globaline purchased at hardware stores may be used by following package instructions.

Food Inventory for Emergency Disaster

In accordance with the menu supplies by the food personnel at Ocean View School District, the following supplies have been inventoried as part of the Emergency & Disaster Plan. Those items in () indicate a shortage to meet the disaster plan requirements over and above our normal program consumables.

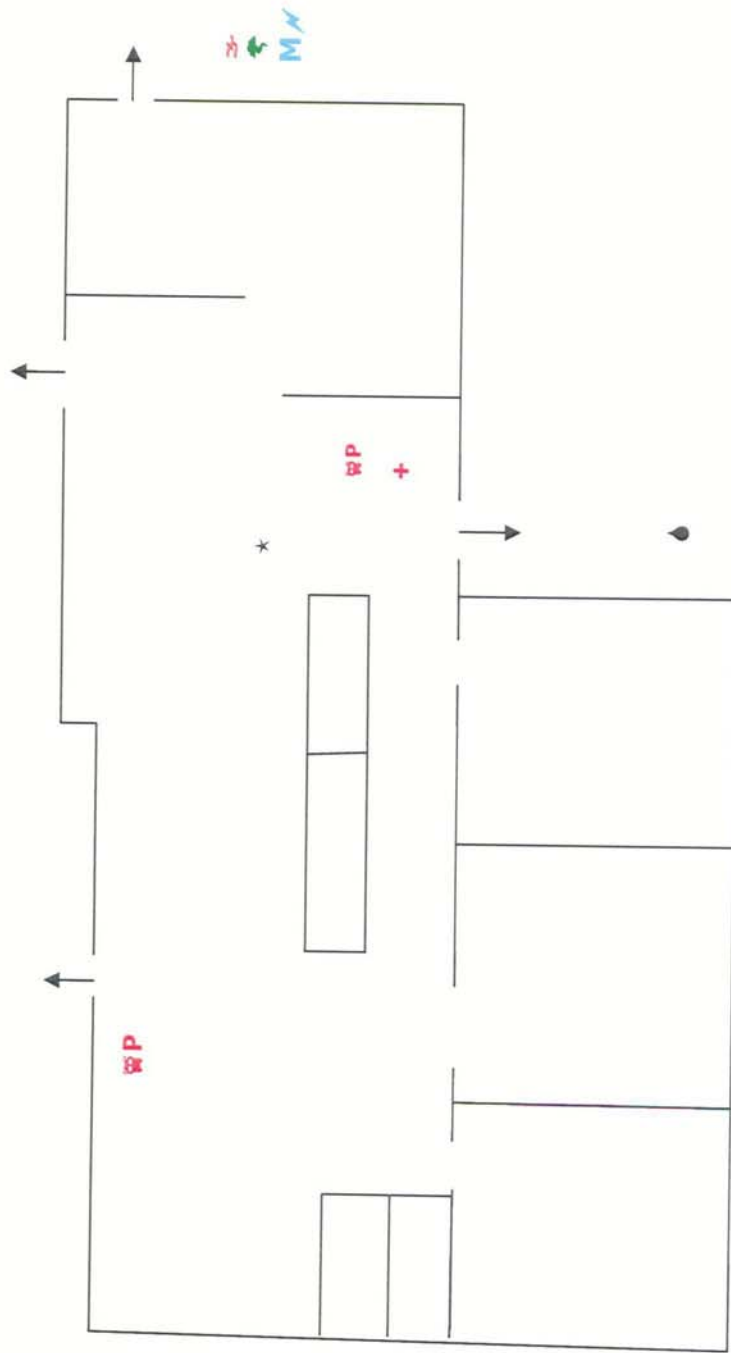
Menu- No water, or electricity		
Breakfast	Lunch	Dinner
	1/2 cup canned beans	1 oz. cheese
1/2 cup fruit	1/2 cup vegetables	1 oz. Meat (cold)
1 serving bread*	1 serving bread*	1/4 cup fruit
8 oz. Cheese	1/4 cup fruit	1 serving bread*

Menu- With water, or electricity		
Breakfast	Lunch	Dinner
3/4 cup cereal	1/2 cup beans	1 oz. Meat (hot)
1 oz. Cheese	1/2 cup vegetables (hot)	1 oz. cheese
8 oz. Milk	8 oz. Milk	1/4 cup fruit
	1 serving bread*	1/2 cup vegetables
		8 oz. milk

Food Items	Req. Inv.	Food Item	Req. Inv.
#10 can Beans (Veg.)	10	#2 1/2 cans meat	29
#10 cans Fruit	20	#10 Cans Vegetable	20
#10 Peanuts	12	Cornmeal	7
Powdered Milk	36	Flour	29
Salt	1	Rice	16
Dry Beans	20	Oatmeal	11

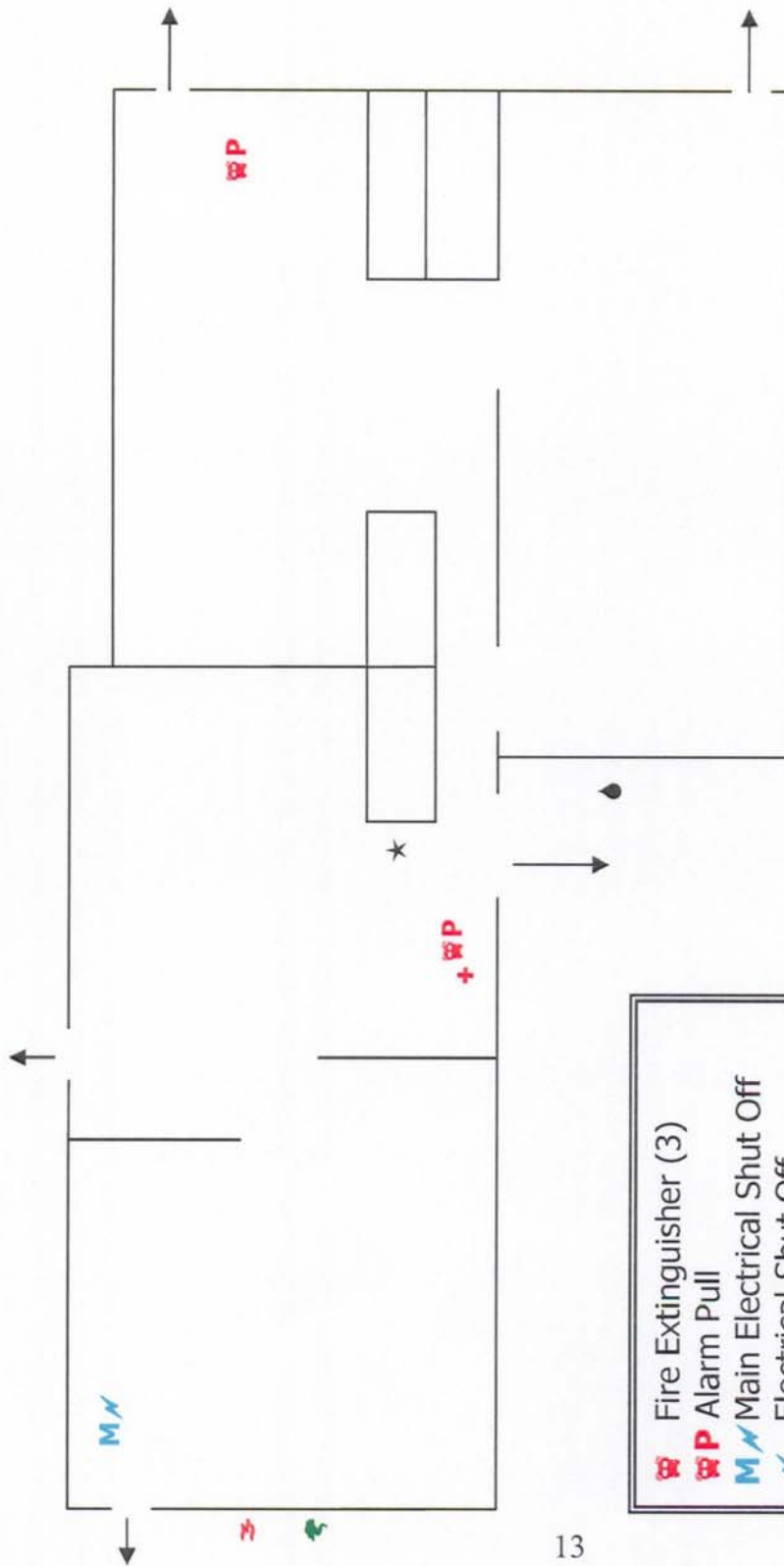
Other Supplies	Qty
Bleach	2 Gallons
Plastic Spoons	500
Plates	500
3.5 oz. Cups	500

EMERGENCY MAPS



OCEAN VISTA EARLY EDUCATION SCHOOL
5191 SQUIRES DRIVE

- Fire Extinguishers (3)
- Alarm Pull
- Main Electrical Shut Off
- Gas Shut Off
- Water Heater
- Water Shut Off
- Emergency Bag
- First Aid Kit



OCEAN VISTA EARLY EDUCATION SCHOOL
5201 SQUIRE DRIVE